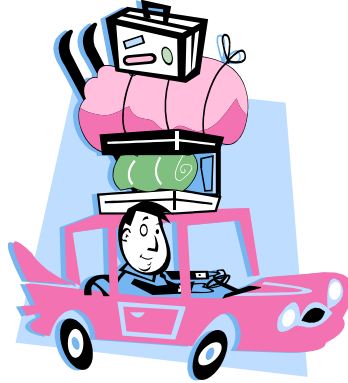


# WHAT YOU NEED TO PACK

(There may be needs specific to only Reservoir Run or College Hill/Campus Meadows)



*When speaking with your roommate/apartment-mates, you need to discuss which of the following items that you should bring, and which items you can share.*

## LIVINGROOM

TELEVISION, DVD, VCR, STEREO AND/OR RADIO  
ENTERTAINMENT CENTER (OPTIONAL)  
LABEL ALL GAMES, CD'S, & MOVIES  
CABLE WIRES

## KITCHEN

MICROWAVE (ALREADY INCLUDED @ RESERVOIR RUN)  
POTS & PANS  
DISHES & SILVERWARE  
TOASTER  
PAPER TOWELS  
GLASSES/CUPS  
NON-PERISHABLE FOOD ITEMS  
DISH TOWELS/SPONGES  
TRASH CAN

## CLEANING MATERIALS

VACUUM, BROOM AND MOP  
DISHWASHER DETERGENT  
LAUNDRY DETERGENT/BASKET (QUARTERS)

## BATHROOM

PLUNGER  
TOILET PAPER  
TOWELS & WASHCLOTHS  
WASTE BASKET  
SHOWER CURTAIN  
FIRST AID KIT  
TOILETRIES

## BEDROOM

SHEETS, PILLOW, PILLOW CASE, BLANKET &  
COMFORTER (EXTRA-LONG TWIN FOR ALL  
APARTMENTS EXCEPT CH 202, CM D-01, CM E-01,  
& CM E-06)  
DESK LAMP OR LIGHT  
COMPUTER/ACCESSORIES/SURGE PROTECTOR  
LOCK BOX/MINI-SAFE  
FAN  
ALARM CLOCK w/ BATTERY BACK UP  
TELEPHONE

**FIRE SAFETY IS TAKEN VERY SERIOUSLY. ANY CURTAINS MUST BE MADE OF A FIRE RETARDANT MATERIAL AND STUDENTS MUST HAVE RECEIPTS/PROOF OF THIS FACT**

IF YOU WILL BE BRINGING A VEHICLE, MAKE SURE THAT YOU HAVE THE PROPER EQUIPMENT SUCH AS JUMPER CABLES, SAFETY EQUIPMENT, AND A SHOVEL. THE \$40 (\$25 FOR SPRING ONLY) PARKING FEE WILL BE DUE AT CHECK-IN.

**NOTE: You should consult your home owners insurance to see if your policy will cover items that are lost, stolen and/or damaged while you are at college. Otherwise, you might want to contact your insurance agent about purchasing renters insurance or consult the enclosed brochure concerning insurance.**

# WHAT TO LEAVE AT HOME

CANDLES  
HALOGEN LAMPS  
AIR CONDITIONERS  
LIVE CHRISTMAS TREES  
WEIGHTLIFTING APPARATUS  
BBQ GRILLS  
CINDER BLOCKS  
EXTERIOR MOUNTED ANTENNAS  
DUCT TAPE  
EXTENSION CORDS

INCENSE  
FIREWORKS  
FIREARMS (INCLUDING PAINTBALL GUNS, BB/PELLET GUNS, ETC. SEE LICENSE FOR FURTHER DESCRIPTION)  
PETS  
GASOLINE/OTHER FLAMMABLE LIQUIDS  
DRUGS/ALCOHOL/KEGS/BEER BALLS  
DECORATIVE OR EMPTY ALCOHOL CONTAINERS  
DRUM SETS/ELECTRIC GUITARS/AMPLIFIED EQUIPMENT  
FOREMAN GRILL, ETC